

JIBBI 1670

CRAWLER TELESCOPIC BOOM



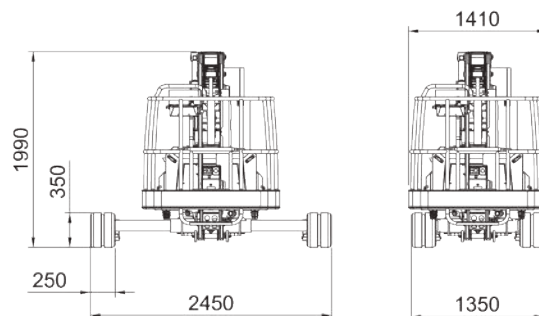
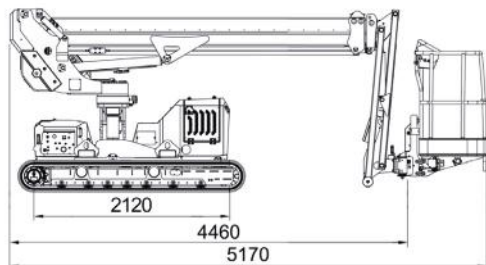
PATENT PENDING

1670 EVO
1670 LTH



ALMACRAWLER

JIBBI 1670



Self-levelling tracked telescopic boom

Piattaforma autolivellante cingolata a braccio telescopico



Cable remote console by AUTEK
Console via cavo by AUTEK

Patent pending innovations

New Dynamic Work Performance (DWP by Almac)

Undercarriage integrated by new Safe-lock System

Brevetti in approvazione

Nuovo Dynamic Work Performance (DWP by Almac)

Sottocarro integrato con nuovo Safe-lock System

IDS

INTEGRATED DRIVE SYSTEM
SINGLE USE OF THE JOYSTICK
USO SINGOLO DEL JOYSTICK



16,00 m

WORKING HEIGHT
ALTEZZA DI LAVORO

+/-70°

BASKET ROTATION
ROTAZIONE CESTA

220°

TURRET ROTATION
ROTAZIONE RALLA

1.90 / 2.10 / 2.45 m

RESIZABLE UNDERCARRIAGE
SOTTOCARRO RESTRINGIBILE

DYNAMIC LEVELLING

15° LONGITUDINAL
15° LATERAL

PATENT PENDING

Technical data

Max working height	16,00 m
Max height basket floor	14,00 m
Moving height	9,80 m
Max outreach (load 80 kg)	8,50 m
Max outreach (load 140 kg)	7,70 m
Max outreach (load 230 kg)	6,70 m
Rotation angle	+/- 110°
Basket size	1,40 x 0,70 m
Basket rotation angle	+/- 70°
Max basket capacity	230 kg
Length in stowed position (with detached basket)	5,10 (4,40) m
Min width in stowed position	1,35 m
Medium working width	1,90 m
Max working width	2,45 m
Min height in stowed position	1,99 m
Longitudinal leveling	+/- 15°
Lateral leveling	+/- 15°
Max gradeability	25°
Max side gradeability	25°
Drive speed (fast)	2,50 km/h
Security speed	0,40 km/h

JIBBI 1670

Dati tecnici

Altezza massima di lavoro
Altezza piano calpestio
Altezza di traslazione
Sbraccio max (car. 80 Kg)
Sbraccio max (car. 140 Kg)
Sbraccio max (car. 230 Kg)
Angolo di rotazione torretta
Dimensioni navicella
Angolo di rotazione navicella
Portata massima in navicella
Lunghezza richiusa (navicella smontata)
Larghezza minima richiusa
Larghezza media di lavoro
Larghezza massima di lavoro
Altezza minima richiusa
Livellamento longitudinale
Livellamento laterale
Pendenza massima superabile
Pendenza laterale massima
Velocità traslazione (rapida)
Velocità sicurezza

Extras - On Demand

- **Radio remote control**
Radiocomando
- **Non-marking tracks**
Cingoli antitraccia
- **Electric pump 220V 2,2kW**
Elettropompa 220V 2,2kW
- **Winch kit 200kg**
Kit verricello 200kg
- **Lubricant kit for arctic climate**
Kit Lubrificante per clima artico
- **Ultrasonic Anti-collision System**
Sistema Anti-collisione ad Ultrasuoni
- **Wide Basket (1,80 x 0,70 m)**
Navicella grande (1,80 x 0,70 m)

Weights

Traffic load	3,10 kN/m ²	3,15 kN/m ²
Total weight	3850 kg	3910 kg

EVO

LTH

Pesi

Power

Engine	3TNM68 -AS Yanmar engine (diesel) 14 kW - 19,2 Hp	Lithium battery pack 300Ah-48V DC 4 kW
--------	--	---

Potenza

Motore



UAS

ULTRASONIC ANTI-COLLISION SYSTEM

Basket size

Dimensioni navicella

Standard
1.4 m

Optional
1.8 m



WINCH KIT
KIT VERRICELLO

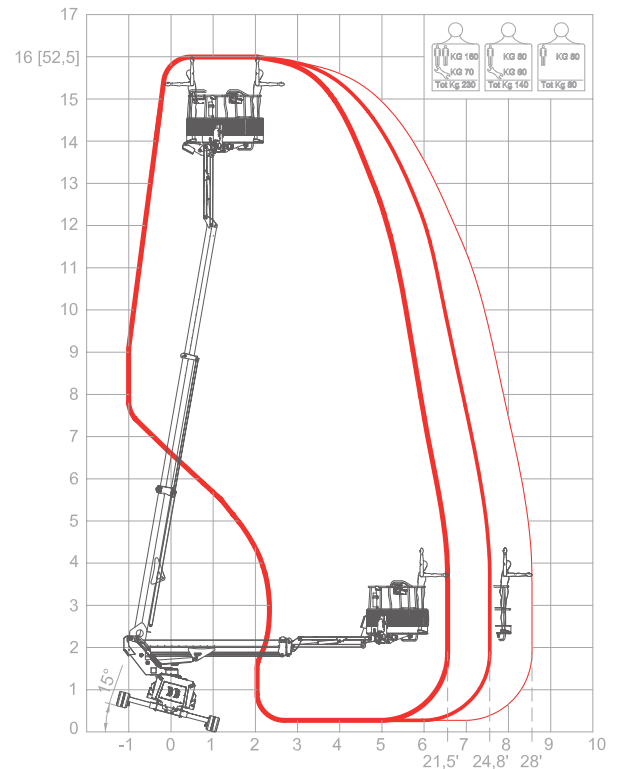
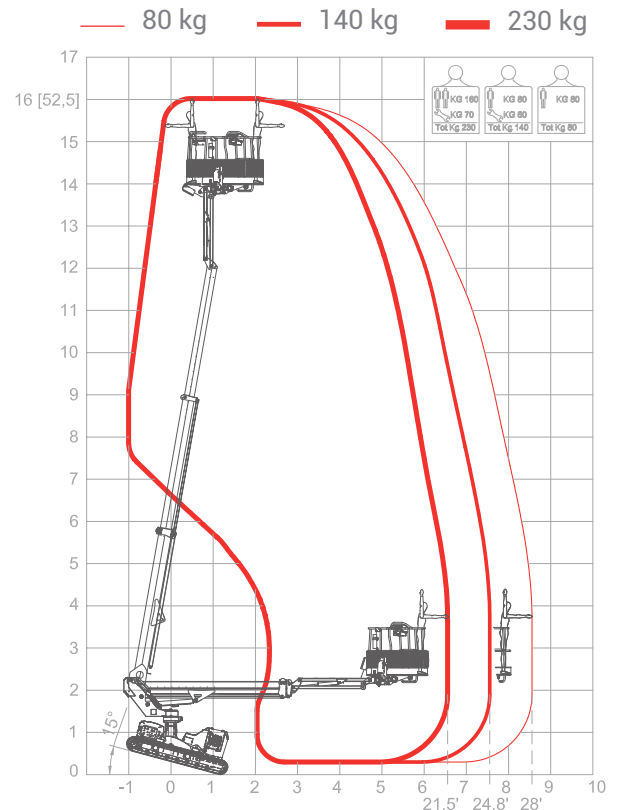
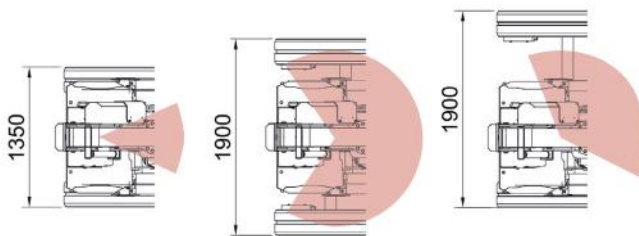
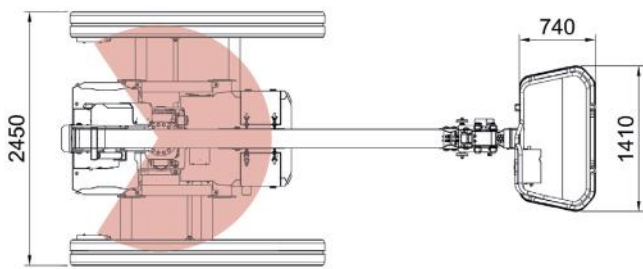
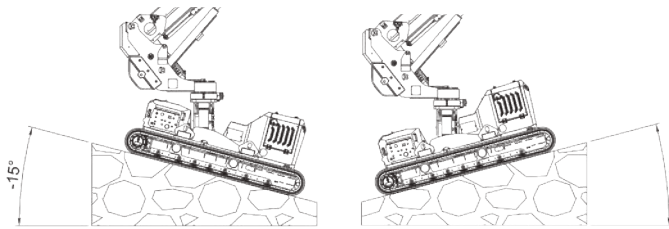
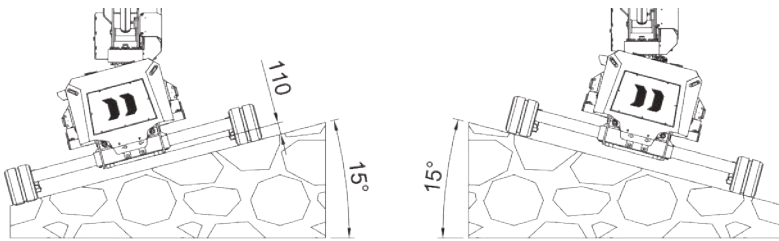


Optional

ALMACRAWLER

JIBBI 1670

16.0m	230kg	±15°	2.0 km/h	±15°
MAX W.H.	CAPACITY	LONG. LEVEL	SPEED	LATER. LEVEL



Simplify and centralize all after-sales activities management, as well as spare parts purchasing and warranty procedures.

Providing 24/7 access to all technical documents and tools for daily management.

Manage all your ALMAC products in one single online portal.

Semplifica e centralizza la gestione di tutte le attività post vendita, acquisto ricambi e richieste di garanzia

Fornisce accesso 24 /7 a tutti i documenti tecnici e agli strumenti per la gestione della piattaforma.

Gestisci tutti i tuoi prodotti ALMAC in un unico portale online.

Via Caduti sul Lavoro 1
46019 Viadana (MN) - ITALY
+39 0375 83 35 27
info@almac-italia.com

Rev.02

**MYALMAC
CONTROL
PANEL**



ALMACRAWLER