

DB 11 *Dalbetta*



DB 11 Dalbetta

The Dalbetta is the smallest / greatest crane in the DALBE range. Compact, versatile, ingenious, it operates on difficult work-sites, completely solving all problems. No other crane can match it.

La Dalbetta è la più piccola / grande gru costruita in DALBE.

Compatta, versatile, geniale, opera in cantieri impossibili ad altre concorrenti, risolvendo ogni problema al 100%.

Instantaneous self-balancing from the button box.

Autolivellamento istantaneo dalla pulsantiera.

ASD system: motors, microswitches and load limiters at ground level, maintenance and checking on erected crane.

Sistema ASD: motori, finecorsa e limitatori al livello del suolo, manutenzione e controllo a gru elevata.

Hot galvanising for double protection.

Zincatura a caldo a doppia protezione.

DSS: 2 steering axles for complete maneuverability, even sidewise motion.

DSS: 2 assali sterzanti per una manovrabilità totale, con possibilità di spostamenti laterali.

DSS
Double Steering System

Automatic erection by hydraulic control from the button box.

Montaggio idraulico automatico comandato dalla pulsantiera.

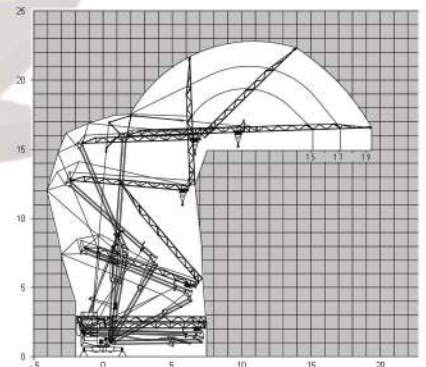
DB 11 X - Three-single-phase, simple and fast.

3 functioning programs: 5.8 kVA at 400 V, 4.5 kW or 3 kW at 230 V.

DB 11 X - Trimonofase facile e veloce.

3 programmi di funzionamento: 5.8 kVA a 400 V, 4.5 kW o 3 kW a 230 V.

50 Hz	Program A			Program B			Program C			
	Three-phase 400 V - 5.8 kVA			Single-phase 230 V - 4.5 kW			Single-phase 230 V - 3 kW			
	m/min	kg	m/min	kg	m/min	kg	m/min	kg		
↑	1	4	4	1200	4	4	1200	4	4	1200
↑	2	▲16	▼16	1200	▲16	▼16	1200	▲12	▼16	1200
↓	3	▲25	▼32	700	▲23	▼29	700	▲18	▼25	700
AUTO selection	3+	32	32	400	29	29	400	25	25	400
E L E C T R O N I C										
↔	1			0	→→→	24	1200			
↔	2			0	→→→	34	700			
E L E C T R O N I C										
↻	0.3 →→→ 0.8 rpm									
E L E C T R O N I C										
⚡	0.75 kW									



Designed and manufactured according to German DIN standards.

Progettazione e costruzione secondo le norme tedesche DIN.



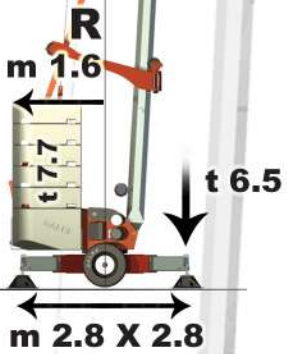
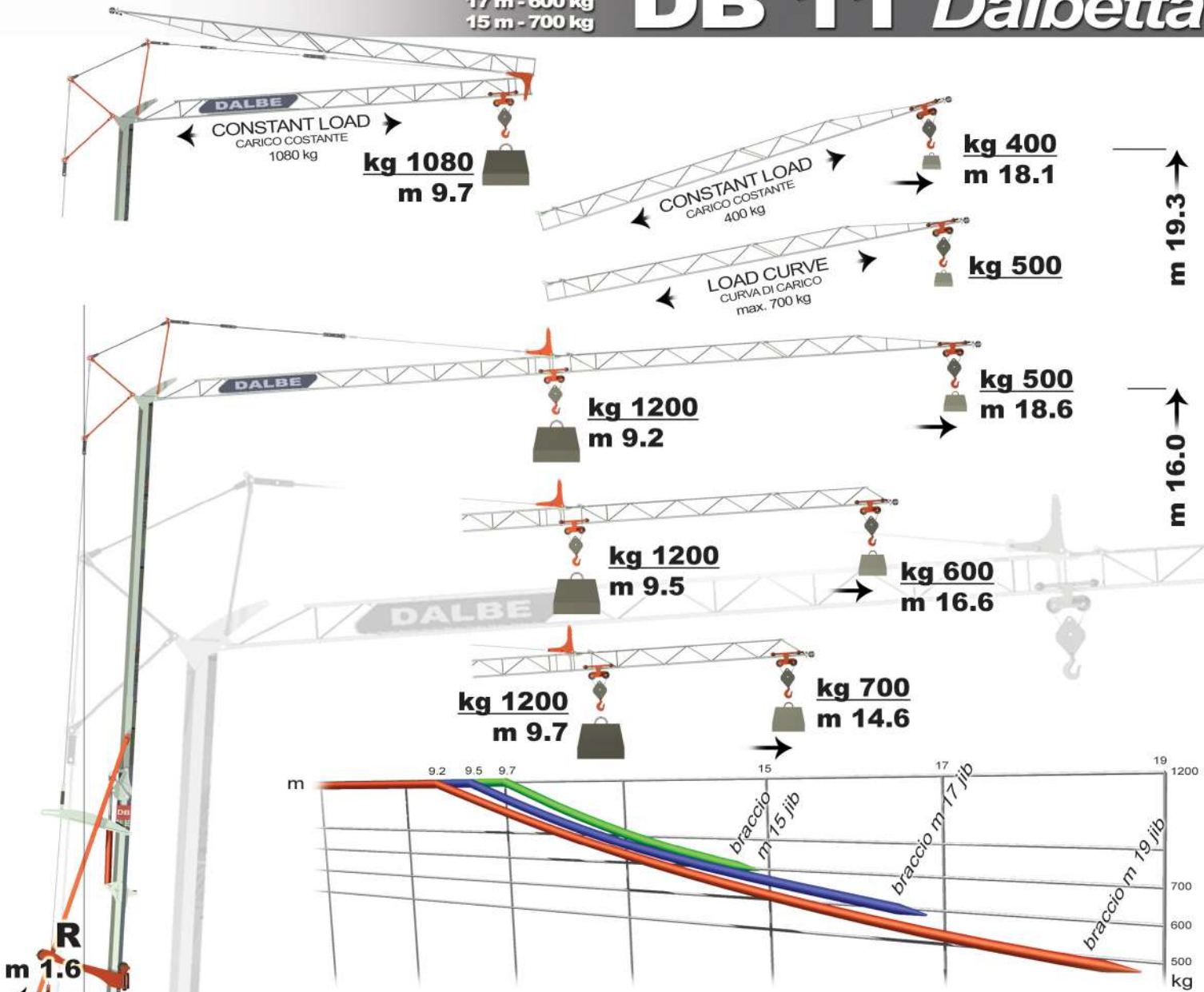
transport

24 t

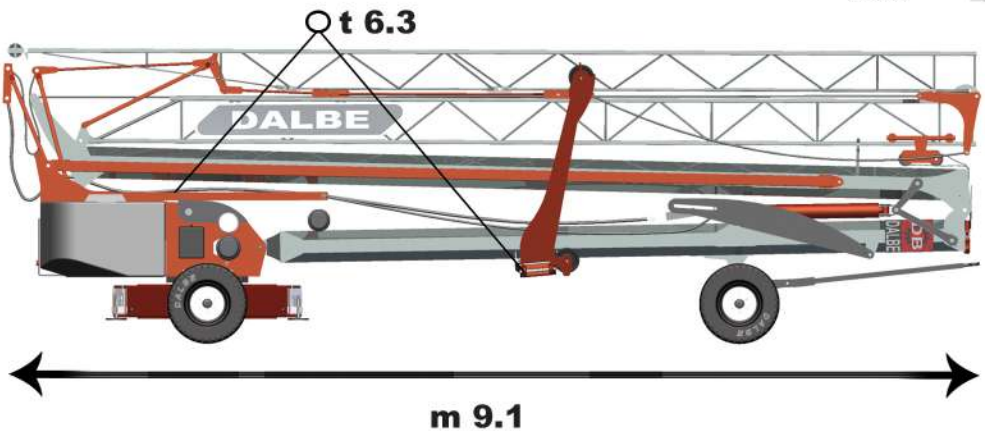
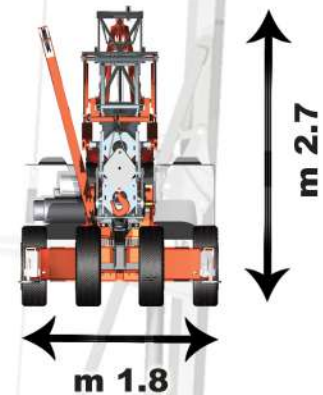
2 gru su 1 camion - 2 cranes on 1 truck

19 m - 500 kg
 17 m - 600 kg
 15 m - 700 kg

DB 11 Dalbetta



<p>SELF-LEVELLING AUTO-LIVELLAMENTO</p>	<p>BALLAST - ZAVORRA 10 x 0,55 t</p>	<p>DERRICK AUTO-ZAVORRAMENTO</p>	<p>OPTIONAL RADIO CONTROL</p> <p>DBLink</p> <p>LOAD MOMENT WIND SPEED BASE TILTING TROLLEY POS. SLEW POS. SMART FUNCT.</p>
--	---	---	--



DIN 15018 - H1•B2/B3 - 15019 - 18800



Technical data are not binding and are only indicative. - I dati e le misure hanno un valore indicativo, pertanto non sono impegnativi.



DB 11



MANUFACTURED IN ITALY WITH EUROPEAN MATERIALS AND COMPONENTS
MACCHINA COSTRUITA IN ITALIA CON MATERIALI E COMPONENTI EUROPEI



the crane professionals

sky
CRANES®

GRU DALBE srl
via Europa, 84 - 21015 Lonate P. - VA - Italy
Tel +39 03 31 66 84 25 r.a.
Fax +39 03 31 66 87 62
db@grudalbe.com



www.dalbecranes.com

AGENTE DI ZONA