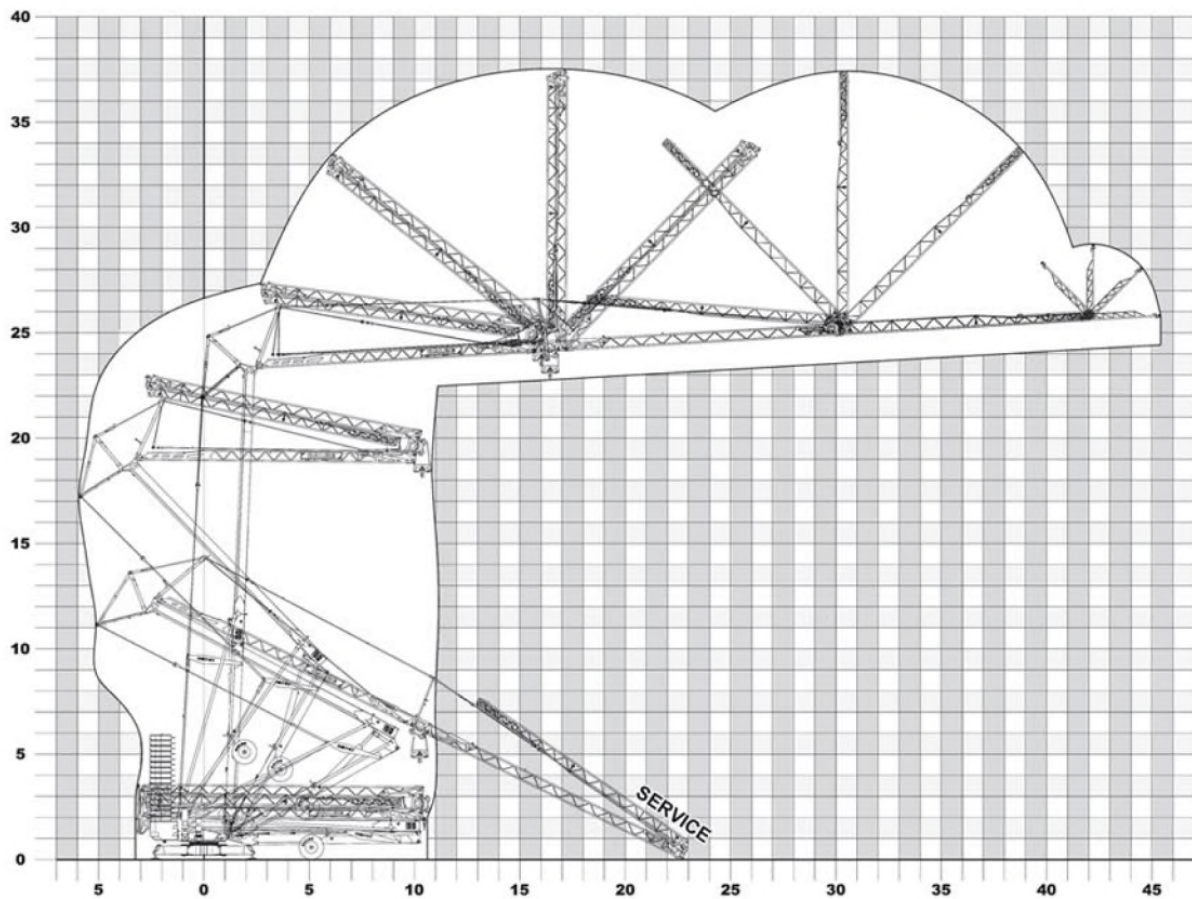
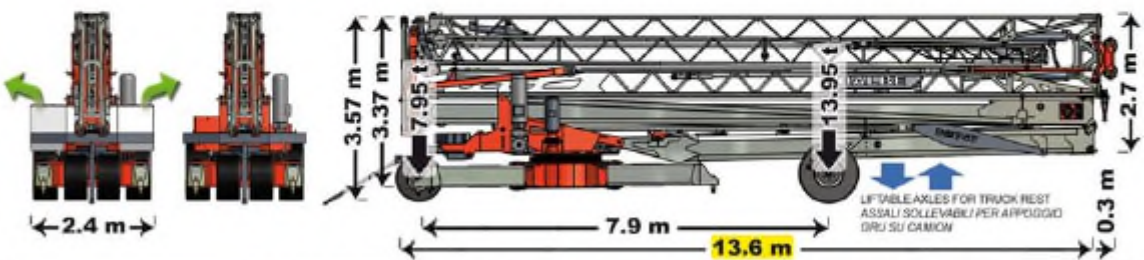
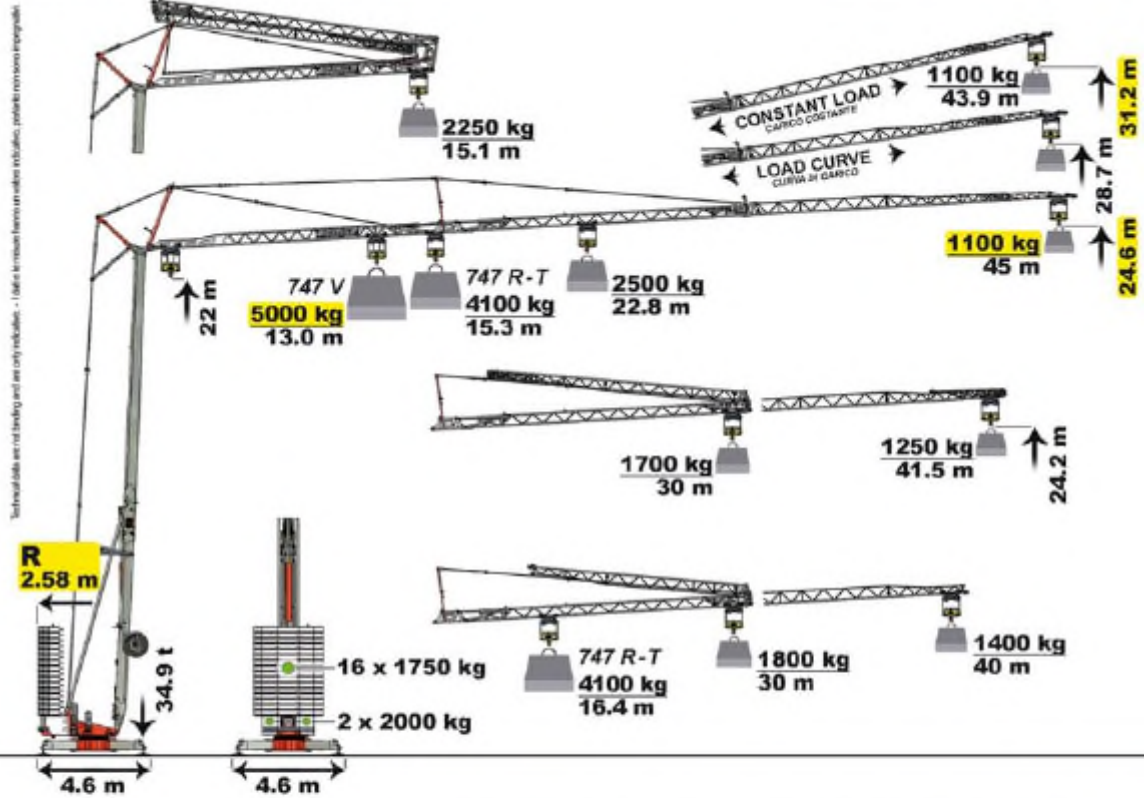
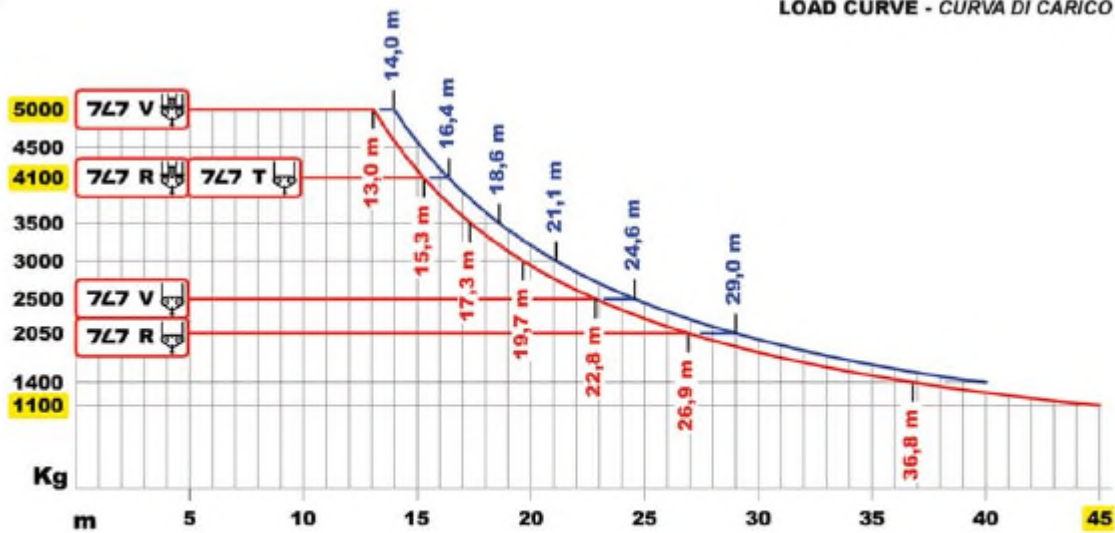


# DB 747

45 m - 1100 kg  
40 m - 1400 kg



LOAD CURVE - CURVA DI CARICO



CHOICE OF PERFORMANCE AND REQUIRED POWER - ALTERNATIVE DI PRESTAZIONI E POTENZA RICHIESTA

DB 747 R			
400 V - 50 Hz (60 Hz opt. available)			
ELECTRONIC			
	m/min	max kg	
↑	1	5	2050
↑	AUTO SELECT 2	24	2050
↑	2+	28	1800
↓	3	41 → 55	1100
VARIOMATIC			
11 kW	↑	1	3
↑	AUTO SELECT 2	12	4100
↑	2+	14	3600
↓	3	20 → 28	2200
VARIOMATIC			
←	1	0 → 24	4100
←	2	0 → 44	2200
←	2	0 → 52	1400
ELECTRONIC			
↻	rpm		
↻	1	0 → 0.25	
↻	2	0 → 0.7	
4.0 kW			
17 kVA			

DB 747 V			
400 V - 50 Hz (60 Hz opt. available)			
ELECTRONIC			
	m/min	max kg	
↑	1	5	2500
↑	AUTO SELECT 2	26	2500
↑	2+	31	2250
↓	3	46	1400
VARIOMATIC			
14.7 kW	↑	1	3
↑	AUTO SELECT 2	13	5000
↑	2+	16	4500
↓	3	23	2800
VARIOMATIC			
←	1	0 → 14	5000
←	2	0 → 29	5000
←	3	0 → 44	2200
←	3	0 → 52	1400
ELECTRONIC			
↻	rpm		
↻	1	0 → 0.25	
↻	2	0 → 0.5	
↻	3	0 → 0.8	
4.0 kW			
21 kVA			

DB 747 T			
400 V - 50 Hz (60 Hz opt. available)			
ELECTRONIC			
	m/min	max kg	
↑	1	5	4100
↑	AUTO SELECT 2	22	4100
↑	2+	26	3600
↓	3	42	2000
VARIOMATIC			
18 kW	↑	1	3
↑	AUTO SELECT 2	13	5000
↑	2+	16	4500
↓	3	23	2800
VARIOMATIC			
←	1	0 → 17	4100
←	2	0 → 34	4100
←	3	0 → 52	1600
ELECTRONIC			
↻	rpm		
↻	1	0 → 0.25	
↻	2	0 → 0.5	
↻	3	0 → 0.8	
4.0 kW			
25 kVA			

Technical data are not binding and are only indicative - I dati e le misure hanno un valore indicativo, pertanto non sono impegnativi.