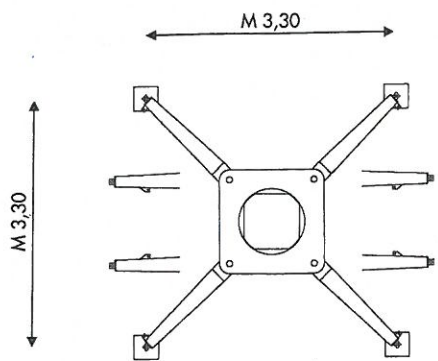
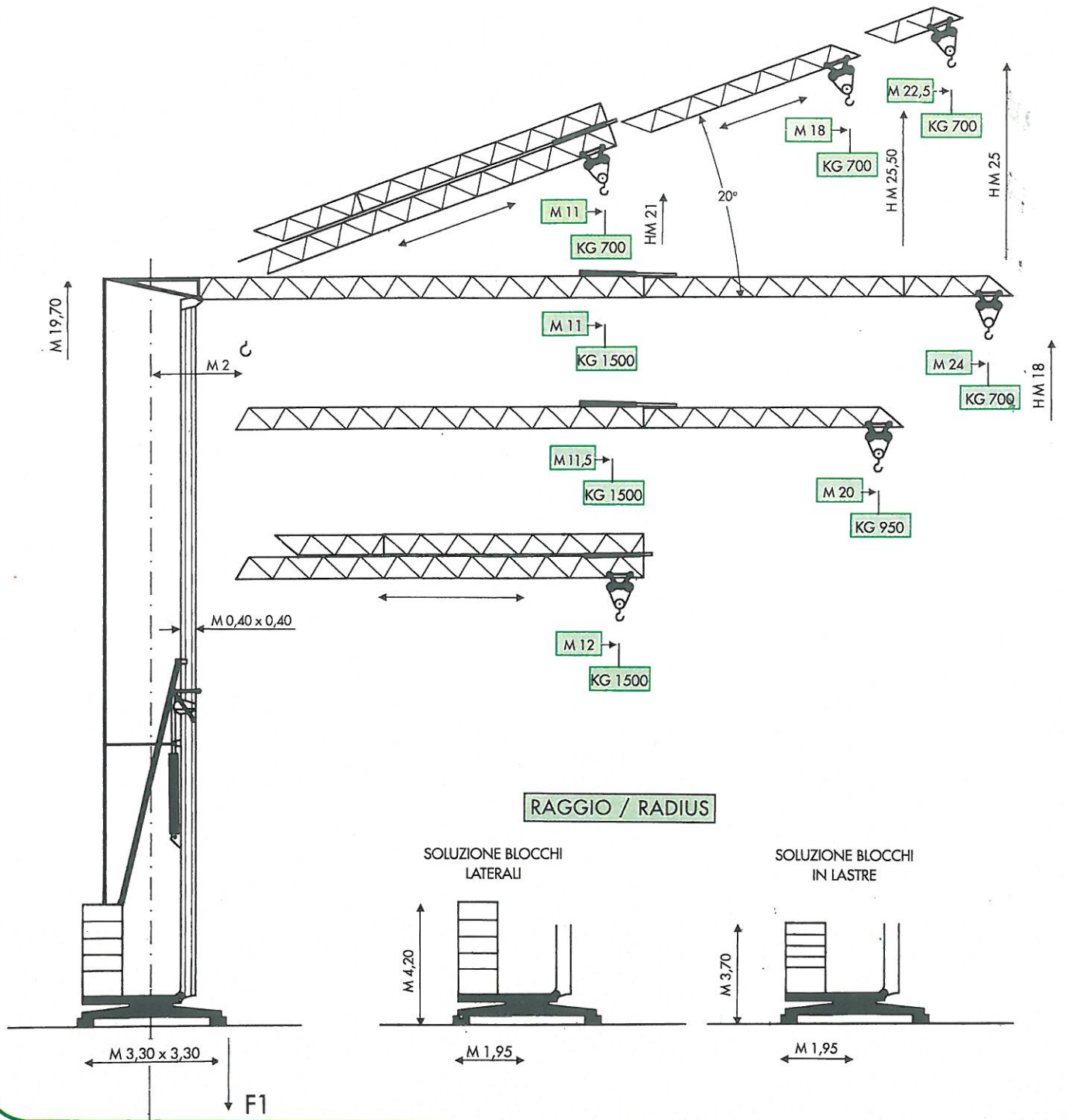




A24 *Luper*

ALFA

MODELLO / TYPE A 24 *Super*

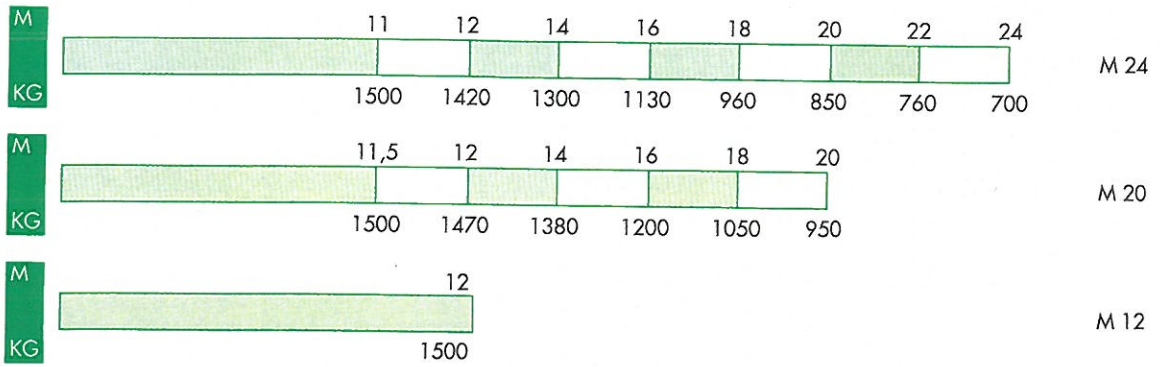


F1	● KG 10500	■ 9800
----	------------	--------

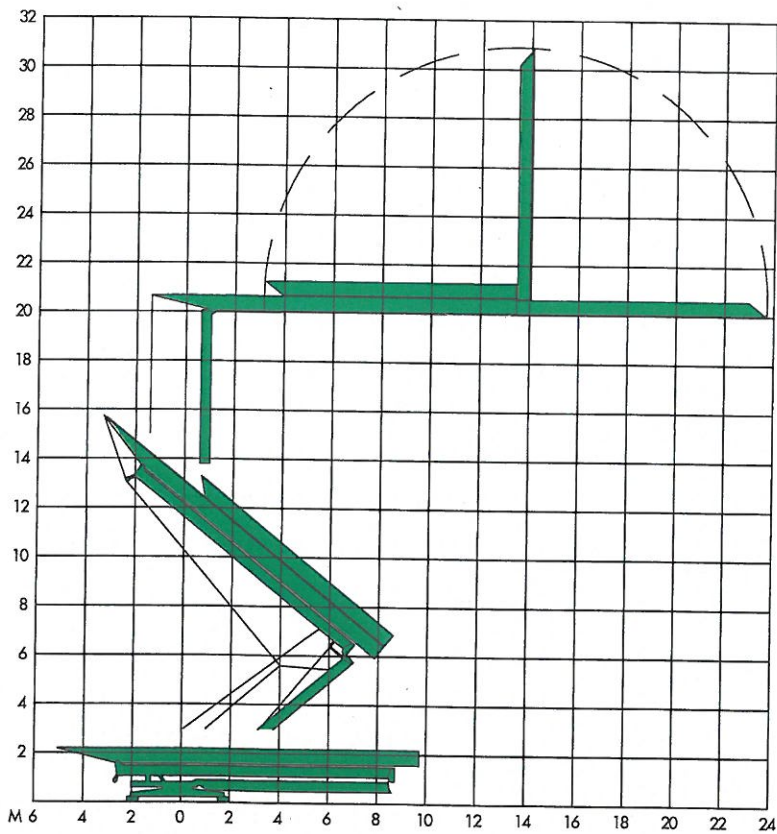
	~ KG 8000/12000	
--	-----------------	--

- IN ESERCIZIO / IN SERVICE
- FUORI ESERCIZIO / OUT OF SERVICE
- PESO SENZA E CON ZAVORRA IN DOTAZIONE
WEIGHT WITHOUT & WITH STANDARD BALLAST

DIAGRAMMI DI CARICO/LOAD DIAGRAMS

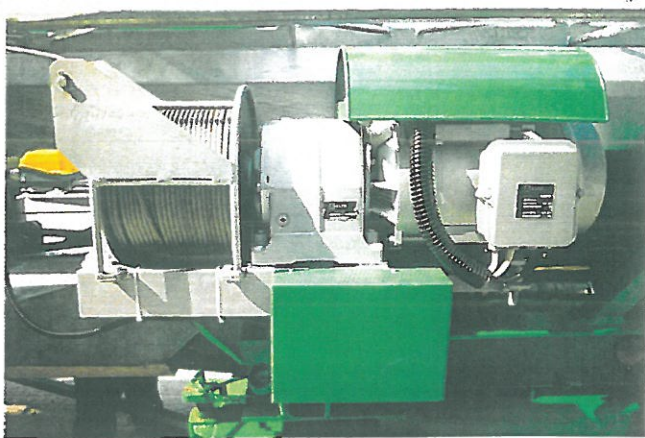


MONTAGGIO/ERECTION

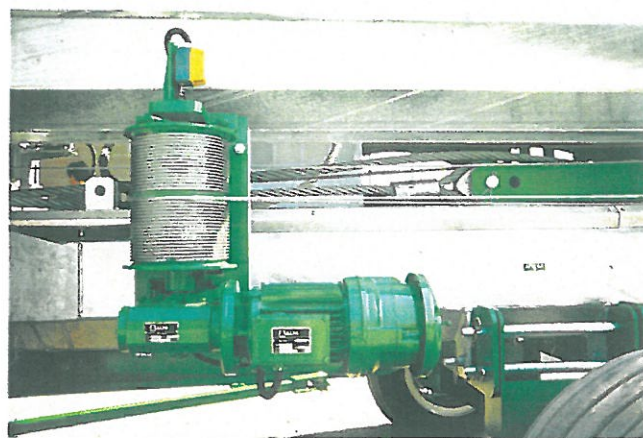


Tempo di montaggio
Erection time
11'

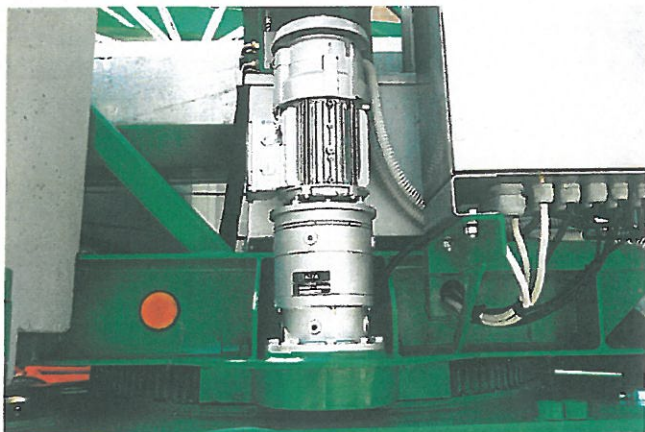




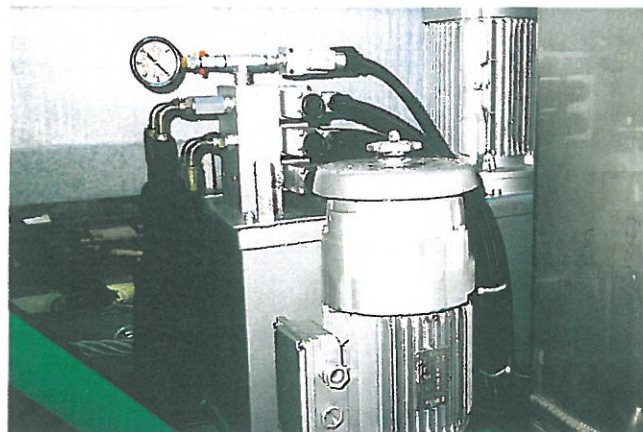
LIVELLO ACUSTICO DEI MECCANISMI A NORME CEE
SOUND LEVEL OF MECHANISMS AS PER EEC RULES



ARGANO DEL CARRELLINO POSIZIONATO IN BASSO
TROLLEY WINCH IN LOW POSITION



ROTAZIONE ELETTRONICA IN PRESA DIRETTA
DIRECT DRIVE ELECTRONIC SLEWING



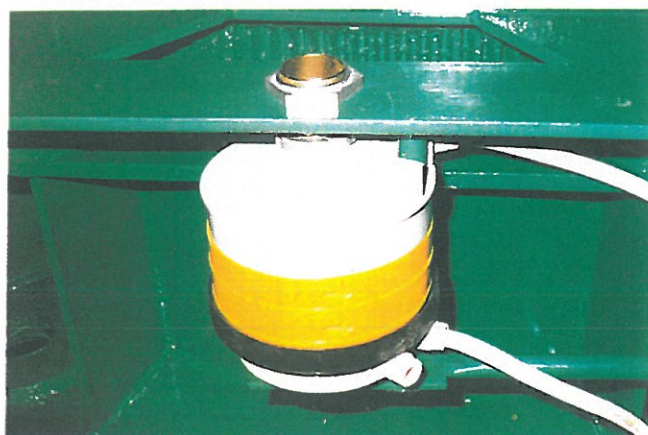
IDRAULICA PROTETTA E COMANDATA A DISTANZA
HYDRAULIC DEVICE PROTECTED AND REMOTE-CONTROLLED



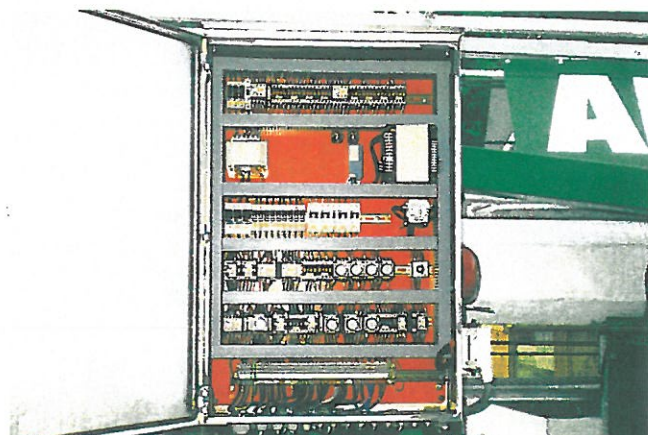
LIMITATORI DI CARICO IN BASSO (DPR 547 E CIRC. 77)
LOAD LIMITING DEVICES IN LOW POSITION (AS PER RULES)



LIMITATORI DI MOMENTO IN BASSO (DPR 547 E CIRC. 77)
MOMENT LIMITING DEVICES IN LOW POSITION (AS PER RULES)



COLLETTORE ELETTRICO SENZA LIMITATORE DI GIRI
ELECTRICAL SLIP RING WITHOUT REVOLUTIONS LIMIT



QUADRO ELETTRICO INOX SECONDO NORME CEI 445
INOX ELECTRICAL BOARD AS PER CEI 445 RULES



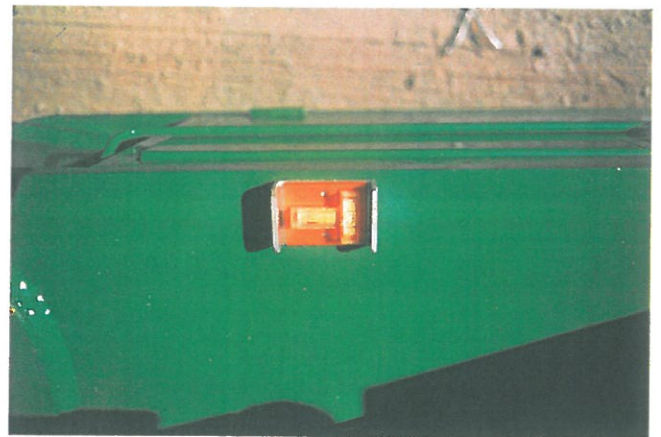
CARRELLINO COMPLETO DI RUOTE LATERALI DI GUIDA
TROLLEY COMPLETE OF LATERAL GUIDE WHEELS



BOZZELLO DA KG. 1500 CON TIRO SEMPLICE
HOOK BLOCK FOR KG. 1500 WITH 2/FALLS



ZAVORRA MOBILE IN BLOCCHI DA KG. 1000
ADDITIONAL BALLAST - BLOCKS OF KG. 1000



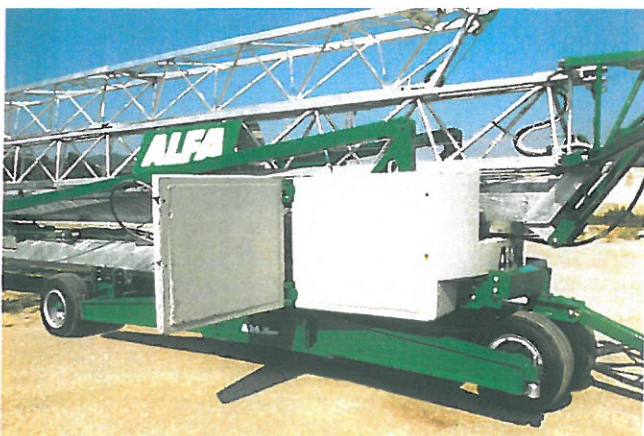
DISPOSITIVI DI LIVELLAMENTO SUI DUE LATI
LEVELING DEVICES ON BOTH SIDES



INNESTO ASSALE ANTERIORE CON ALTEZZA VARIABILE
FRONT AXLE COUPLING WITH VARIABLE HEIGHT



INNESTO ASSALE POSTERIORE CON ALTEZZA VARIABILE
REAR AXLE COUPLING WITH VARIABLE HEIGHT



ZAVORRA A BORDO CON INGOMBRO VARIABILE: M 1,90 ▶ 2,40
STANDARD BALLAST WITH VARIABLE WIDTH: MT. 1,90 ▶ 2,40



GRU IN ASSETTO DI TRAINO CON ZAVORRA DI MONTAGGIO
CRANE READY FOR TOWING WITH ASSEMBLY BALLAST

MECCANISMI/MECHANISMS A 24 *Super*

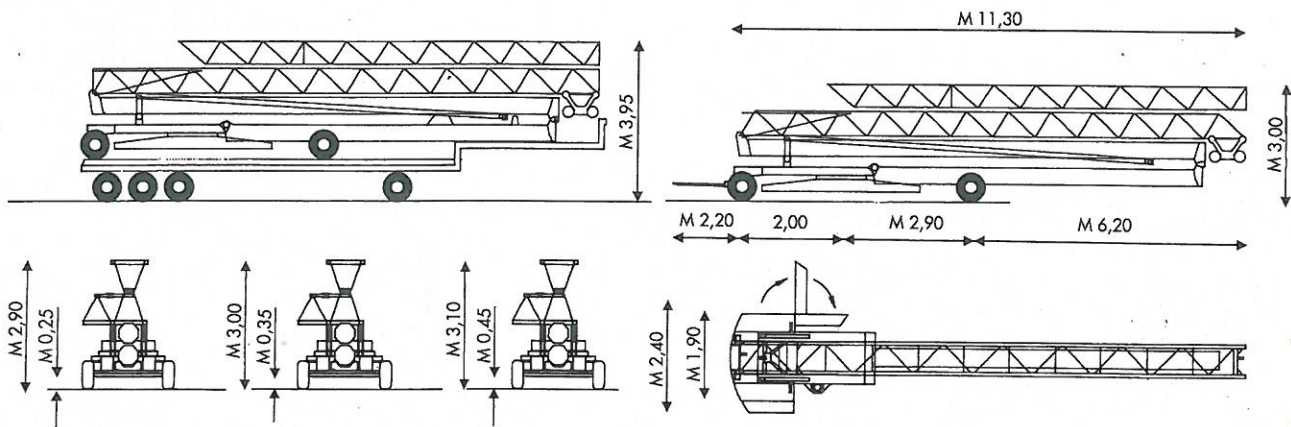
	HP	M/1'		HP	M/1'	KG	
	3	30		I	4,5	1500	
	2	0 ▶ 0,9		7,5/7,5/2 (109-3VS)	II	18	1500
	3	2		III	36	750	

ALIMENTAZIONE/POWER SUPPLY	V	380/50 HZ	MANIPOLATORE/LEVER BOX	♦
ASSALI TRAINO/TRANSPORT AXLES			MONTAGGIO IDRAULICO/HYDRAULIC ERECTION	BAR 110 ▶ 280
ASSORBIMENTO/MAINS SUPPLY	KW	10	ZAVORRA IN DOTAZIONE/STANDARD BALLAST	~ KG 4300
BRACCIO IMPENNATO/LUFFING JIB			ZAVORRA SUPPLEMENTARE/ADDITIONAL BALLAST	~ KG 8000 ♦
FALCONE ZAVORRA/BALLAST DERRICK			ZINCATURA TORRE E FRECCIA/TOWER AND JIB GALVANIZATION	

dati non impegnativi e modifiche riservate / subject to modifications

a richiesta / on request ♦

TRASPORTO/TRANSPORT



© ALFA 1995



AGENTE/DEALER

ALFA SRL • 61015 NOVAFELTRIA (PS) • ITALY • ☎ 0541-920096 • TLX 550216 • FAX 0541-921847