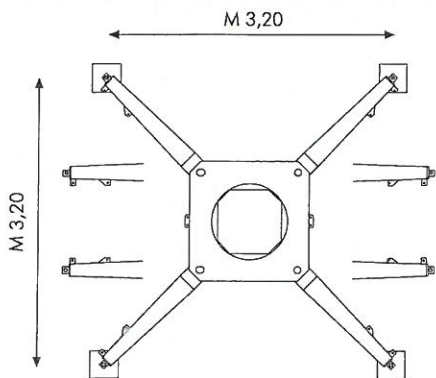
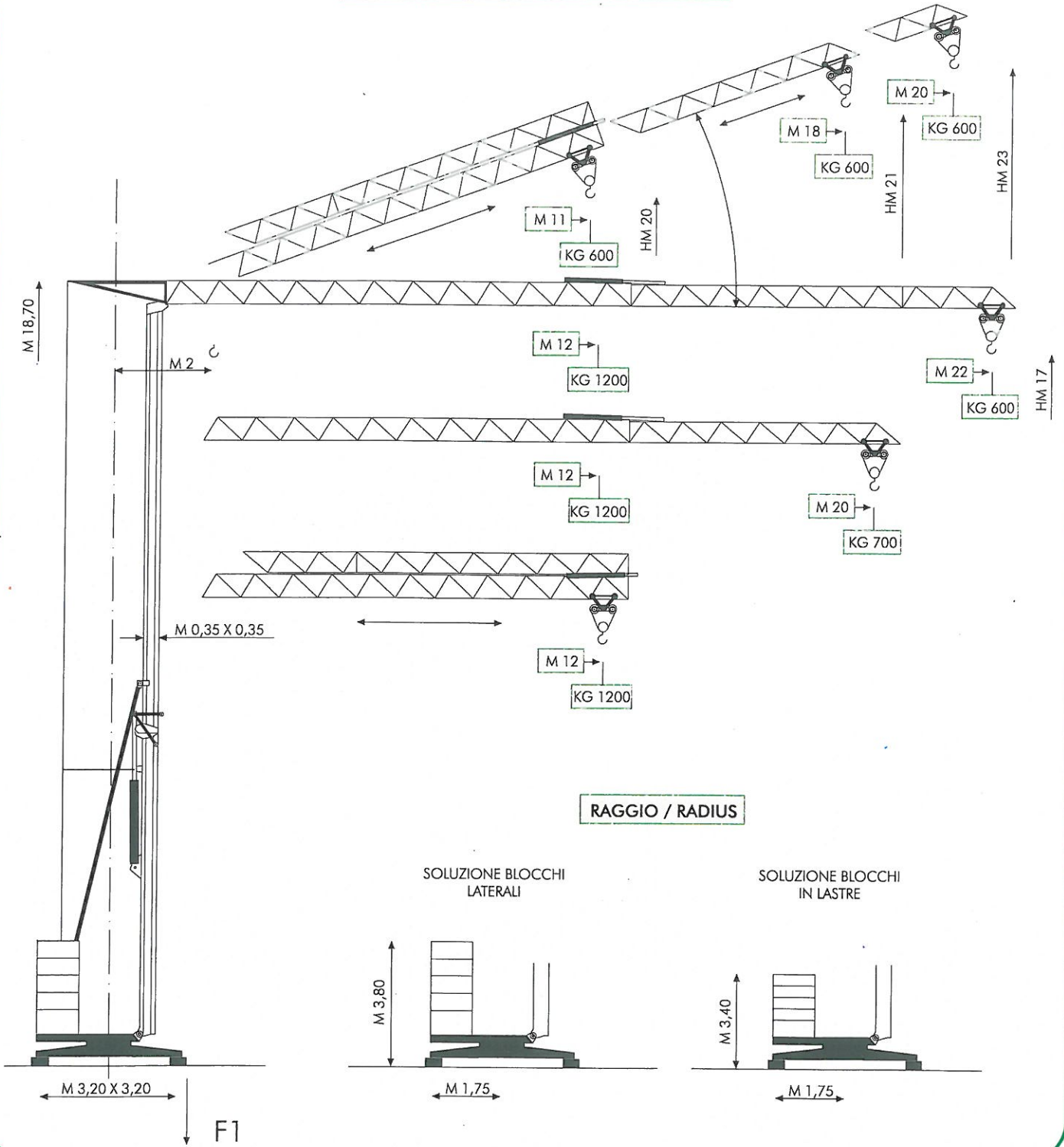




A22 *Lynx*

ALFA

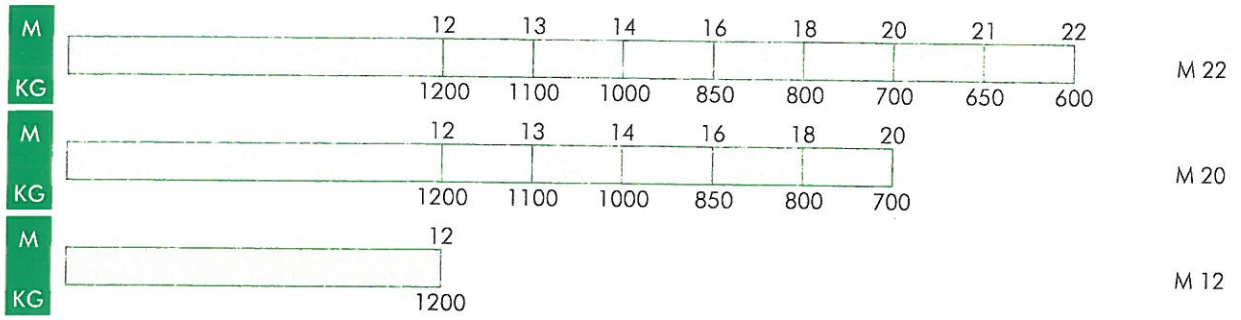
MODELLO/TYPER A 22 Super



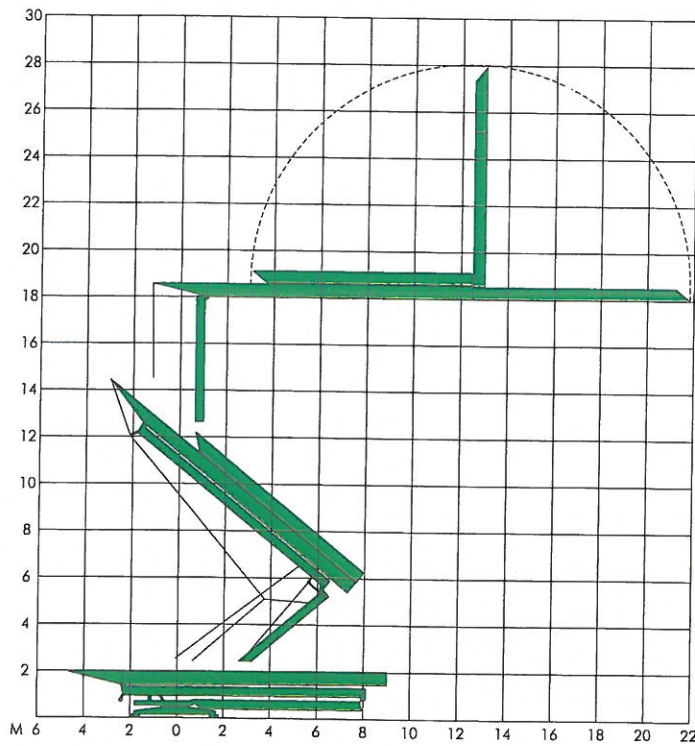
F1	● KG 9500	■ 8800
	~KG 7000/11000	

- IN ESERCIZIO / IN SERVICE
- FUORI ESERCIZIO / OUT OF SERVICE
- PESO SENZA E CON ZAVORRA IN DOTAZIONE
WEIGHT WITHOUT & WITH STANDARD BALLAST

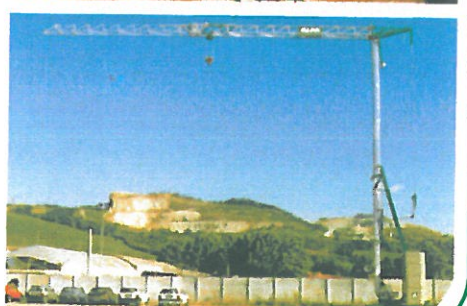
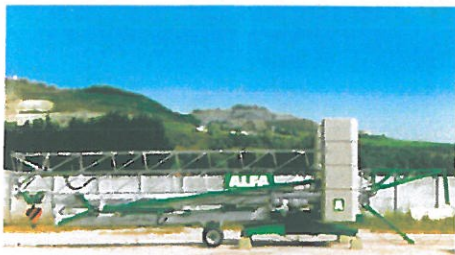
DIAGRAMMI DI CARICO/LOAD DIAGRAMS



MONTAGGIO/ERECTION



Tempo di montaggio
Erection time
11'



MECCANISMI/MECHANISMS A 22 Super TRIFASE/THREE-PHASE

	HP	M/1'		HP	V	M/1'	KG	
		3 (MRC 86)		30		5/4/2 (108-3VS)	380	I
	1 (MRR3020)	0,9 (G/1'-REV1')	MONTAGGIO ERECTION	III	15			1200
				II	30			700
				3	---	2	---	

A 22 Super MONO-TRIFASE/ONE & THREE-PHASE

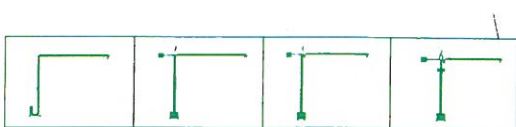
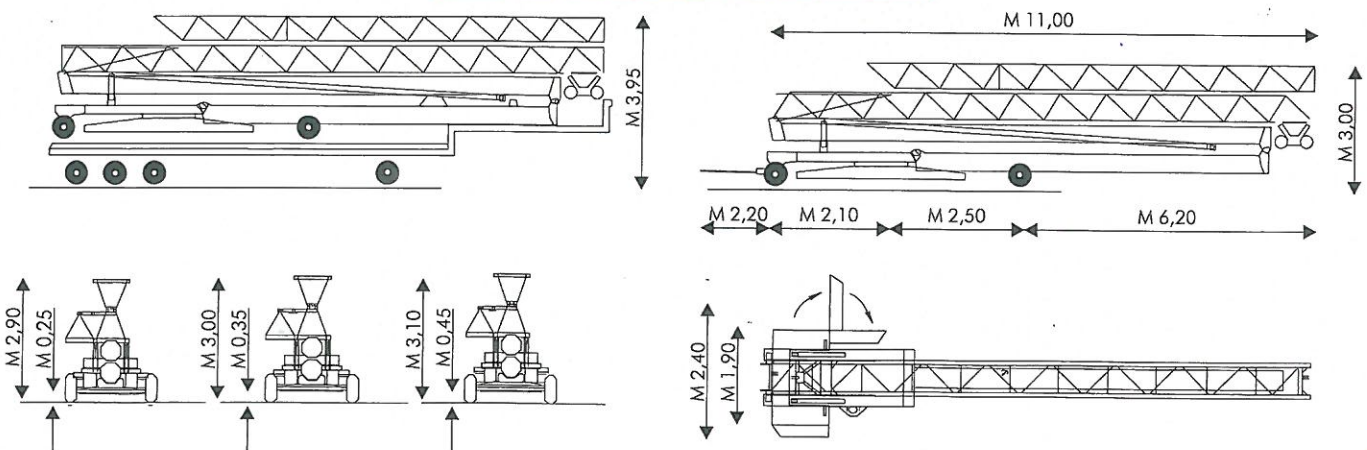
	HP	M/1'		HP	V	M/1'	KG	
		3 (MRC 86)		30		3 (108-3VS)	220	I
	1 (MRR3020)	0,9 (G/1'-REV1')	MONTAGGIO ERECTION	II	8			1000
				III	16			500
				3	---	2	---	

ALIMENTAZIONE/POWER SUPPLY	V 380/220 ♦/50HZ	MANIPOLATORE/LEVER BOX	♦
ASSALI TRAINO/TRANSPORT AXLES		MONTAGGIO IDRAULICO/HYDRAULIC ERECTION BAR 110▶280	
ASSORBIMENTO/MAINS SUPPLY	KW 5/3	ZAVORRA IN DOTAZIONE/STANDARD BALLAST ~KG	3300
BRACCIO IMPENNATO/LUFFING JIB		ZAVORRA SUPPLEMENTARE/ADDITIONAL BALLAST ~KG	8000♦
FALCONE ZAVORRA/BALLAST DERRICK	♦	ZINCATURA TORRE E FRECCIA/TOWER AND JIB GALVANIZATION	

dati non impegnativi e modifiche riservate / subject to modifications

a richiesta / on request ♦

TRASPORTO / TRANSPORT



AGENTE/DEALER