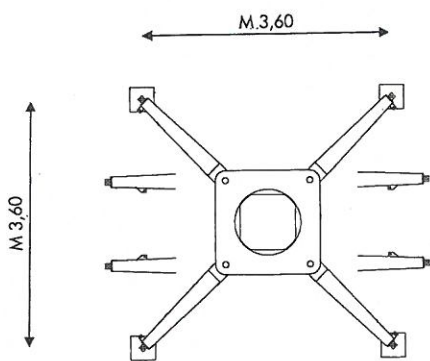
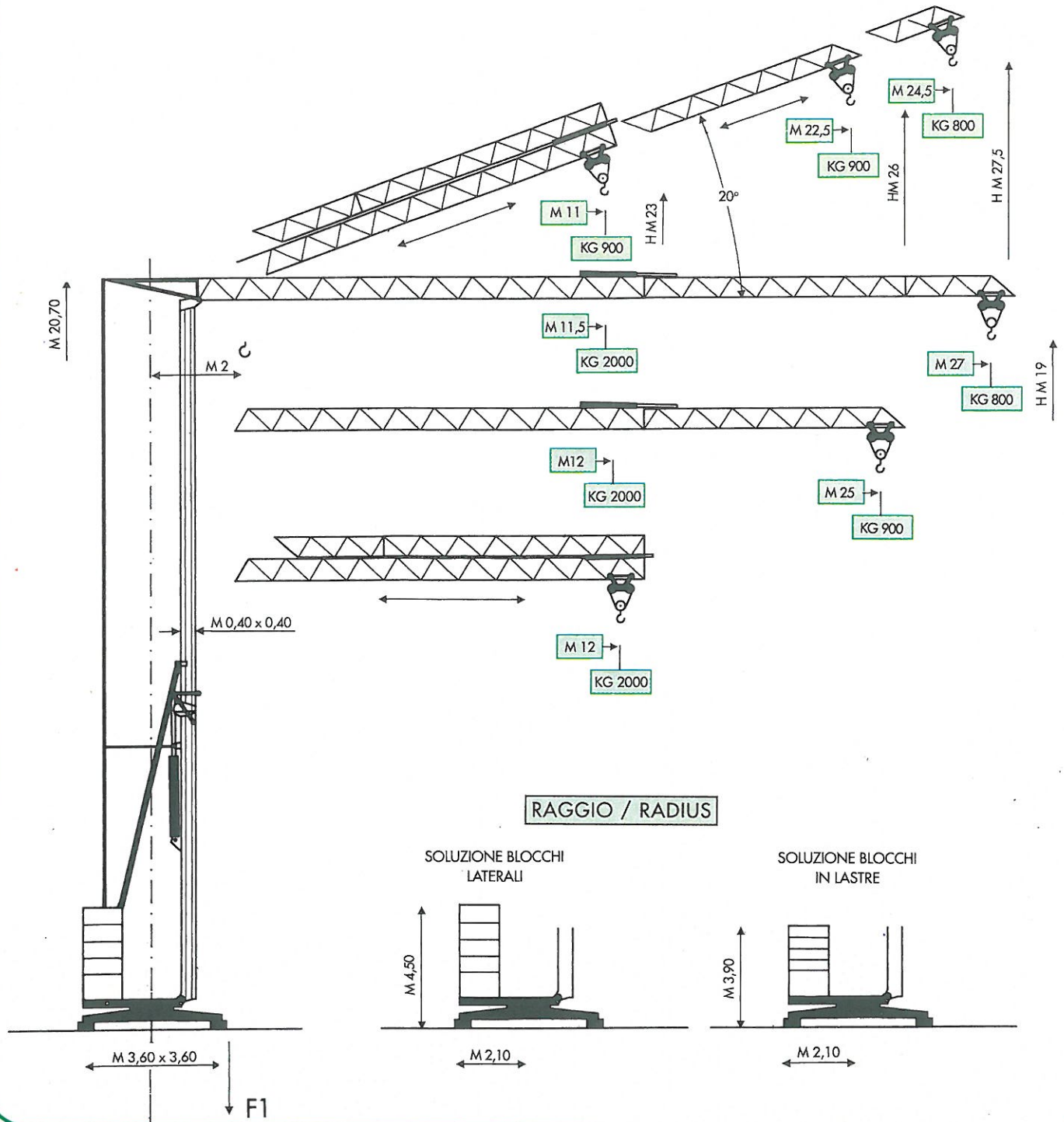


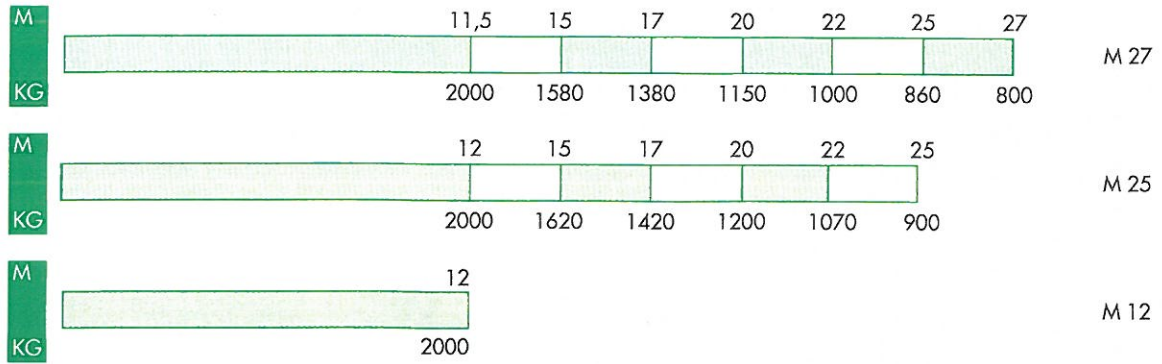
MODELLO / TYPE A 27 *Super*



F1	● KG 10000	■ 13700
	~ KG 9500/14500	

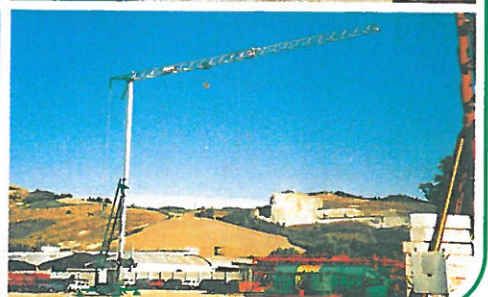
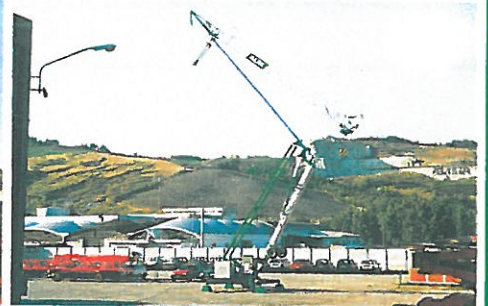
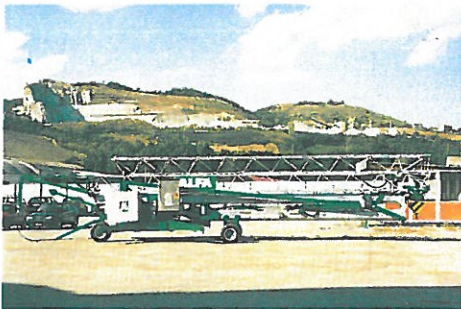
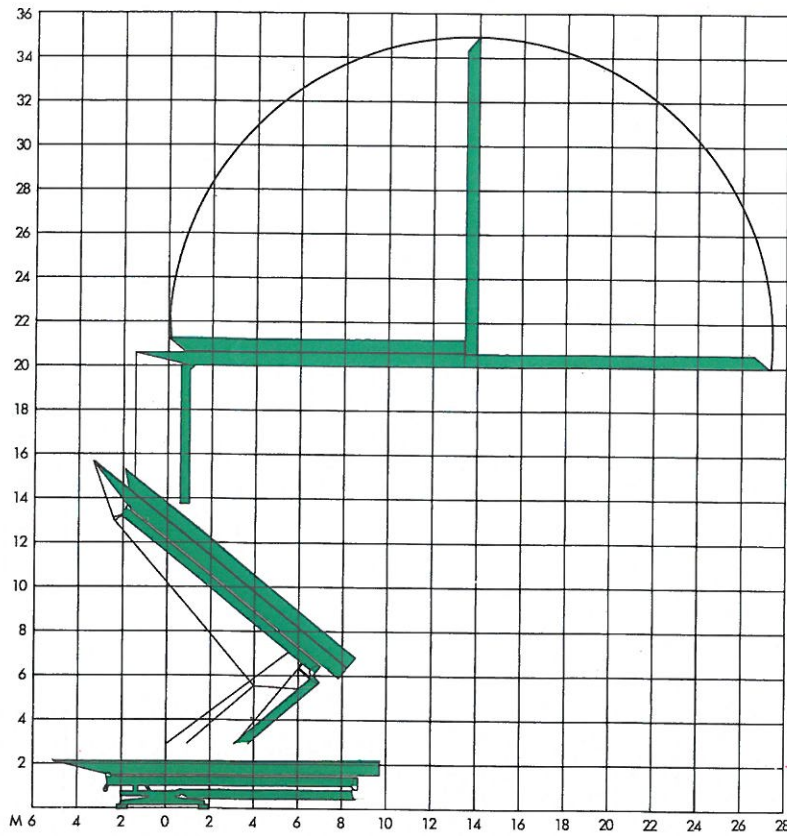
- IN ESERCIZIO / IN SERVICE
- FUORI ESERCIZIO / OUT OF SERVICE
- PESO SENZA E CON ZAVORRA IN DOTAZIONE
WEIGHT WITHOUT & WITH STANDARD BALLAST

DIAGRAMMI DI CARICO/LOAD DIAGRAMS



MONTAGGIO/ERECTION

Tempo di montaggio
Erection time
11'



MECCANISMI/MECHANISMS A 27 *Super*

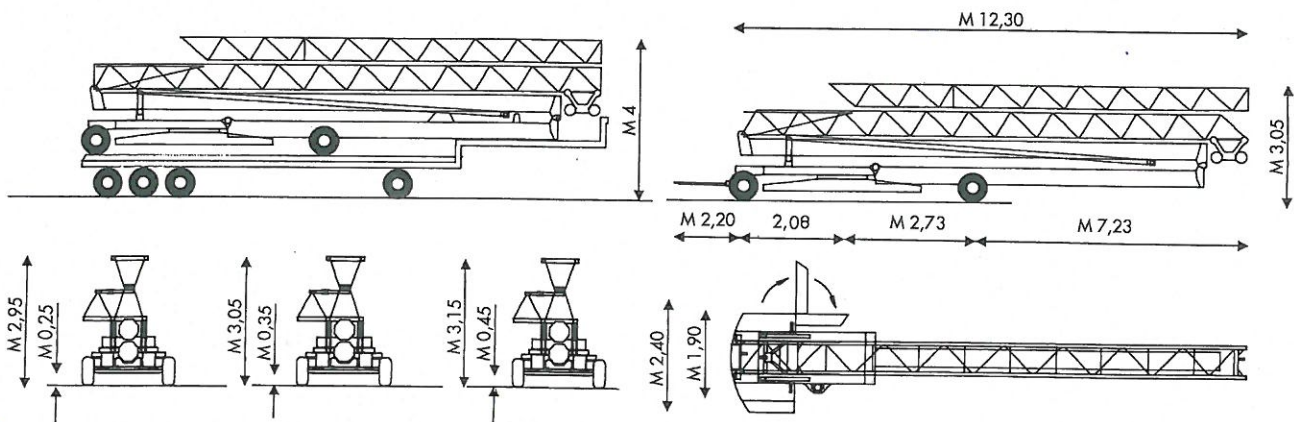
	HP	M/1'		HP	M/1'	KG
	4	30			I 5 ◆ 4	2000
	2	0 ▶ 0,9		10/10/2,5 ◆ 7,5/7,5/7,5 (115-3VS)	II 20 ◆ 16,5	2000
	3	2			III 40 ◆ 33	1000

ALIMENTAZIONE/POWER SUPPLY	V	380/50 HZ	MANIPOLATORE/LEVER BOX	◆
ASSALI TRAINO/TRANSPORT AXLES			MONTAGGIO IDRAULICO/HYDRAULIC ERECTION	BAR 110 ▶ 280
ASSORBIMENTO/MAINS SUPPLY	KW	18/10 ◆	ZAVORRA IN DOTAZIONE/STANDARD BALLAST	~ KG 5000
BRACCIO IMPENNATO/LUFFING JIB			ZAVORRA SUPPLEMENTARE/ADDITIONAL BALLAST	~ KG 11000 ◆
FALCONE ZAVORRA/BALLAST DERRICK			ZINCATURA TORRE E FRECCIA/TOWER AND JIB GALVANIZATION	

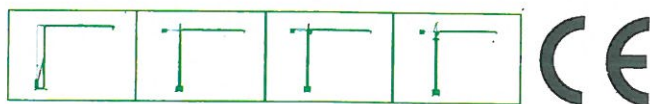
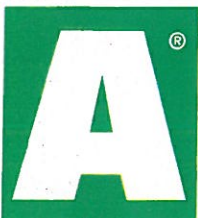
dati non impegnativi e modifiche riservate / subject to modifications

a richiesta / on request ◆

TRASPORTO/TRANSPORT



© ALFA 1995



AGENTE/DEALER

ALFA SRL • 61015 NOVA FELTRIA (PS) • ITALY • ☎ 0541-920096 • Tlx 550216 • FAX 0541-921847