

ALFA

© ALFA

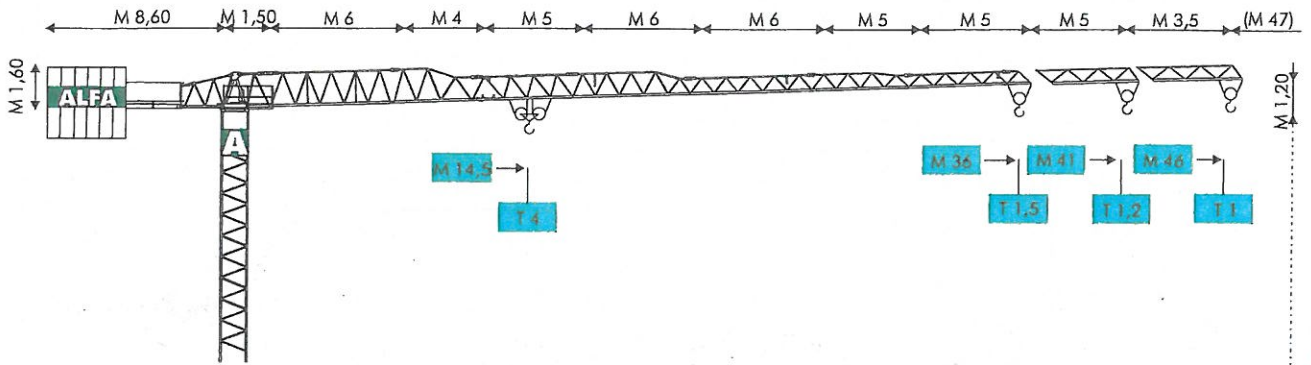
GRUPPO FINALFA



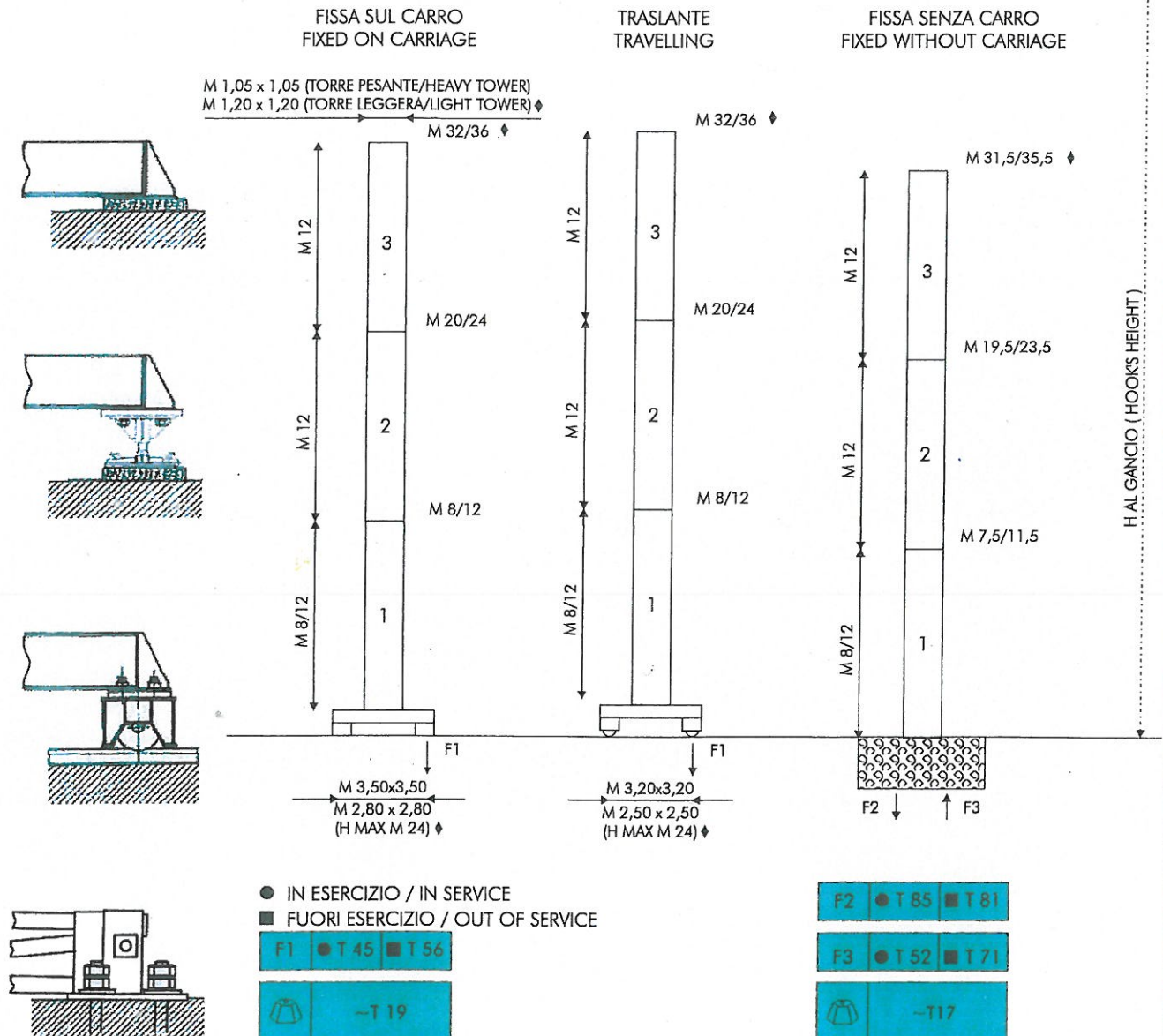
CITYMATIC

A663

MODELLO/TYPE A 663

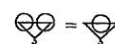


COMPOSIZIONE TORRE/TOWER SECTIONS

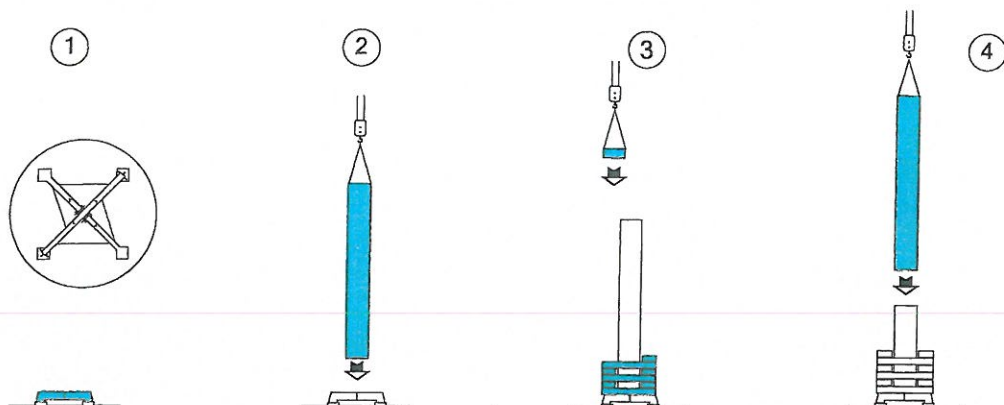


DIAGRAMMI DI CARICO/LOAD DIAGRAMS

A 663



MONTAGGIO/ERECTION



ASSEMBLAGGIO BASAMENTO
CARRIAGE ASSEMBLY

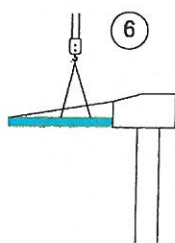
MONTAGGIO PRIMO ELEMENTO
FIRST MAST SECTION ASSEMBLY

CARICO ZAVORRA
BALLAST LOADING

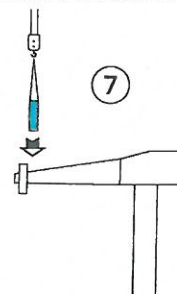
MONTAGGIO EVENTUALI ALTRI ELEMENTI
EVENTUAL OTHER MAST SECTIONS ASSEMBLY



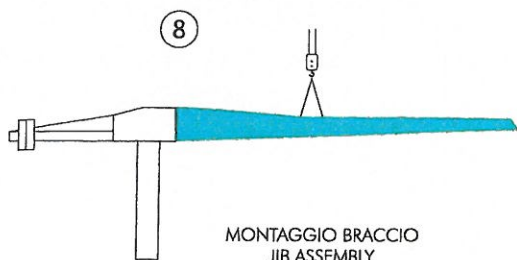
MONTAGGIO ROTAZIONE
SLEWING GROUP ASSEMBLY



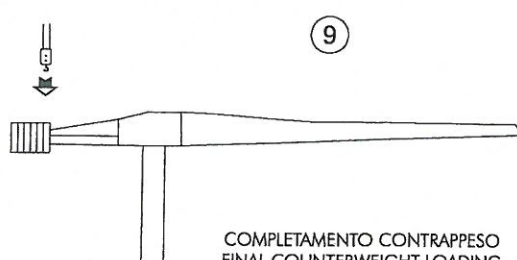
MONTAGGIO CONTROBRACCIO
COUNTERJIB ASSEMBLY



CARICO PARZIALE CONTRAPPESO
PARTIAL COUNTERWEIGHT LOADING



MONTAGGIO BRACCIO
JIB ASSEMBLY



COMPLETAMENTO CONTRAPPESO
FINAL COUNTERWEIGHT LOADING

MECCANISMI/MECHANISMS A 663

	HP	M/T		HP	M/T	T	
	3/4 (MRC 110)	20/40		15/15/4 (196 - 3VS)	I II III	5,5	2,5
	3,5 ♦ (SECAS III)	0 ▶ 45 (MICRO 0 - 5)				22	2,5
	3,5 (SECAS III)	0 ▶ 0,9 (MICRO 0 - 0,1) (G/1'-REV/1)	I II III			44	1,25
					2,5	4	
	2 x 3,5 (SECAS III)	0 ▶ 20 (MICRO 0 - 3)	I II III		11	4	
					22	2,5	
	2 x 3,5 (SECAS III)	0 ▶ 20 (MICRO 0 - 3)	I II III	0 ▶ 60 3/7/22 44/60	2,5/2,5/2,5 1,25/1		
				0 ▶ 30 1,5/3,5/11 22/30	4/4/4 2,5/2		

ALIMENTAZIONE/POWER SUPPLY	V	400/50HZ	PROFILO ROTAIA/RAIL SECTION	~KG	46
ASSORBIMENTO/MAINS SUPPLY	KW	25/15 ♦	RADIOCOMANDO/RADIOCONTROL		
CABINA PENSILE/SLEWING CAB			TIRO IN QUARTA/FOUR FALLS REEVING		♦
CONTRAPPESO/COUNTERWEIGHT	~T	13,7	ZAVORRA BASE/BASE BALLAST	~T	18 ▶ 58 ♦

dati non impegnativi e modifiche riservate / subject to modifications

a richiesta / on request ♦

CARATTERISTICHE PRINCIPALI

STRUTTURE IN ACCIAIO FE 510C A NORME DIN • ACCOPPIAMENTI SPINATI, SEDI ALESATE • PERNERIA, FUNI, PIATTAFORME E PASSERELLE AEREE ZINCATE • RUOTISMI SU CUSCINETTI E RIDUTTORI EPICICLOIDALI IN PRESA DIRETTA • RALLA PRECARICATA E TRATTATA TERMICAMENTE, CON LUBRIFICAZIONE CENTRALIZZATA (ALFALUB) • ROTAZIONE ELETTRONICA A REGOLAZIONE CONTINUA DI VELOCITÀ (SECAS III) • DISTRIBUZIONE A DUE VELOCITÀ, O SU RICHIESTA, A REGOLAZIONE CONTINUA DI VELOCITÀ (SECAS III) • TRASLAZIONE ELETTRONICA A REGOLAZIONE CONTINUA DI VELOCITÀ (SECAS III) • RUOTE DI TRASLAZIONE IN ACCIAIO FUCINATO, TRATTATE TERMICAMENTE • PIATTAFORMA GIREVOLE, CON I PRINCIPALI GRUPPI ELETTROMECCANICI A BORDO • TIRO IN QUARTA • CABINA PENSILE ROTANTE • ARMADIO ELETTRICO IN ACCIAIO INOX A NORME CEI • VERNICIATURA AD IMMERSIONE CON DOPPIA MANO DI SMALTO AL CROMO-ZINCO (DEPAS) • DISPOSITIVI DI SICUREZZA SECONDO LA DIRETTIVA MACCHINE EUROPEA "CE".

MEAN FEATURES

ST 510C STEEL STRUCTURES CONFORM TO DIN RULES • PINED CONNECTIONS, BORED SEATS • GALVANIZED PINS, ROPES, PLATFORMS AND FOOTPATHS • DRIVING MECHANISMS ON BEARINGS AND DIRECT DRIVE PLANETARY GEARS • PRELOADED AND HEAT TREATED SLEWING RING WITH CENTRALISED LUBRICATION (ALFALUB) • ELECTRONIC SLEWING WITH CONTINUOUS SPEED ADJUSTMENT (SECAS III) • TWO-SPEED TROLLEY WINCH, OR ON REQUEST WITH CONTINUOUS SPEED ADJUSTMENT (SECAS III) • ELECTRONIC TRAVELLING WITH CONTINUOUS SPEED ADJUSTMENT (SECAS III) • FORGED STEEL TRAVELLING WHEELS HEAT TREATED • SLEWING PLATFORM WITH MAIN ELECTRO - MECHANICAL GROUPS ON BOARD • FOUR FALLS REEVING • SLEWING OPERATOR'S CAB • STAINLESS STEEL ELECTRICAL BOARD PANEL CONFORMS TO CEI RULES • DIPPING PAINTING WITH DOUBLE COAT OF CHROMIUM ZINC ENAMEL (DEPAS) • SAFETY DEVICES ACCORDING TO "CE" EUROPEAN MACHINE DIRECTIVE

AGENTE/DEALER



ALFA SRL • 61015 NOVA FELTRIA (PU) • ITALY • PH. +39 0541 920096 • FAX 0541 921847

www.alfagru.it - info@alfagru.it